

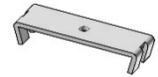
SYSTEM
Guide Wire
2025/09

Guide Wire System

Precision-engineered holders enabling reliable head rail fixation while guiding and tensioning control wires.

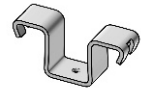
Holder for guide wire
(steel, galvanized)

810 400



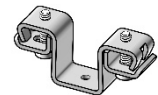
Holder for guide wire for jointed blinds
(steel, galvanized)

810 410



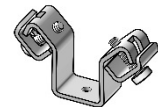
Holder for guide wire, secure version
(steel, galvanized)

810 411



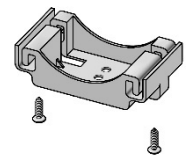
Holder for guide wire, secure version for gears
(steel, galvanized)

810 416



Plastic holder for guide wire, secure
(plastic, black)

810 417



Guide Wire System

Precision-engineered holders enabling reliable head rail fixation while guiding and tensioning control wires.

Pin for Guide Wire
(stainless steel A2)

810 419



Spring 6-8 kg
Spring 9-11 kg
(stainless steel A2)

810 420

810 421



Stop ring for guide wire
(brass, galvanized)

509 440



Plastic noise reduction eye for slat, grey
Plastic noise reduction eye for slat, black
(plastic)

810 292

810 294



Steel guide wire 2,2mm, clear transparent
Steel guide wire 2,2mm, black
(steel zinc plated, plastic covered)

509 005

509 006



Steel guide wire 3,0mm, clear transparent
(**stainless steel V4A**, plastic covered)

509 008



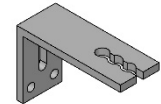
Guide Wire System

Provide stable lower fixation and tensioning for guide wire systems.

Aluminum bracket 80mm

Aluminum anodized
(c-distance 50, 60, 70mm)

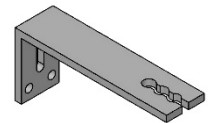
810 500



Aluminum bracket 120mm

Aluminum anodized
(c-distance 90, 100, 110mm)

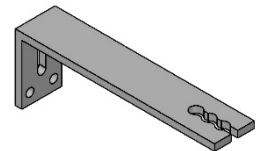
810 510



Aluminum bracket 150mm

Aluminum anodized
(c-distance 120, 130, 140mm)

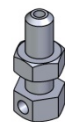
810 520



Tensioning screw with fixation

(stainless steel A2, screw mounted)

810 470



Bracket for floor mounting

(Aluminium base plate)
(Stainless steel A2 stop ring, screw mounted)

810 545

