

SYSTEM

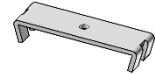
Guide Wire

2020

Guide Wire System Head Rail Holders for guide wire

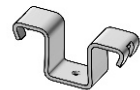
Holder for guide wire
(steel, zinc plated)

810 400



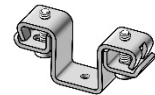
Holder for guide wire for jointed blinds
(steel, zinc plated)

810 410



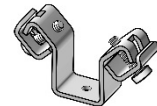
Holder for guide wire, secure version
(steel, zinc plated)

810 411



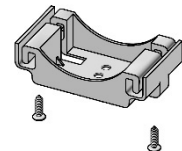
Holder for guide wire, secure version for gears
(steel, zinc plated)

810 416



Plastic holder for guide wire, secure
(plastic, black)

810 417



Guide Wire System

Components for guide wire

Pin for Guide Wire
(stainless steel)

810 419



Spring 6-8 kg
Spring 9-11 kg
(stainless steel)

810 420
810 421



Stop ring for guide wire
(brass, zinc plated)

509 440



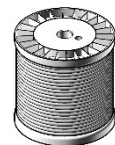
Plastic noise reduction eye for slat, grey
Plastic noise reduction eye for slat, black
(plastic)

810 292
810 294



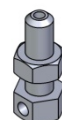
Steel guide wire 2,2mm, clear transparent
Steel guide wire 2,2mm, black
(steel, plastic covered)

509 005
509 006



Guide wire stop ring
(stainless steel, screw mounted)

810 470



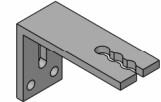
Guide Wire System

Bottom Brackets for guide wire

Aluminum bracket 80mm

Aluminum anodized
(c-distance 50, 60, 70mm)

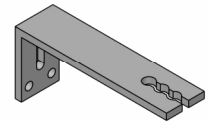
810 500



Aluminum bracket 120mm

Aluminum anodized
(c-distance 90, 100, 110mm)

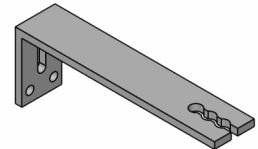
810 510



Aluminum bracket 150mm

Aluminum anodized
(c-distance 120, 130, 140mm)

810 520



Bracket for floor mounting

(plate made of Aluminium)
(stop ring made of stainless steel, screw mounted)

810 545

